

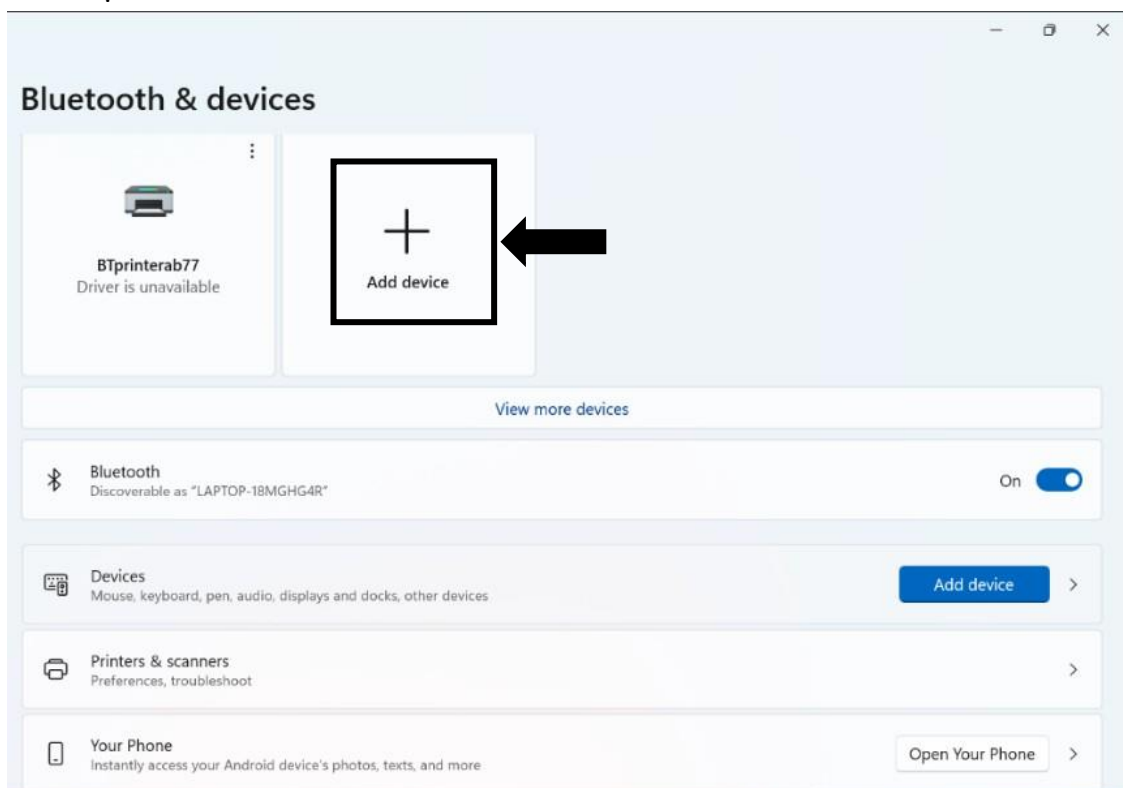
In order to connect Vriddhi L1 with windows via Bluetooth, please follow the below steps

A) Pairing Vriddhi L1 Bluetooth With Laptop/PC

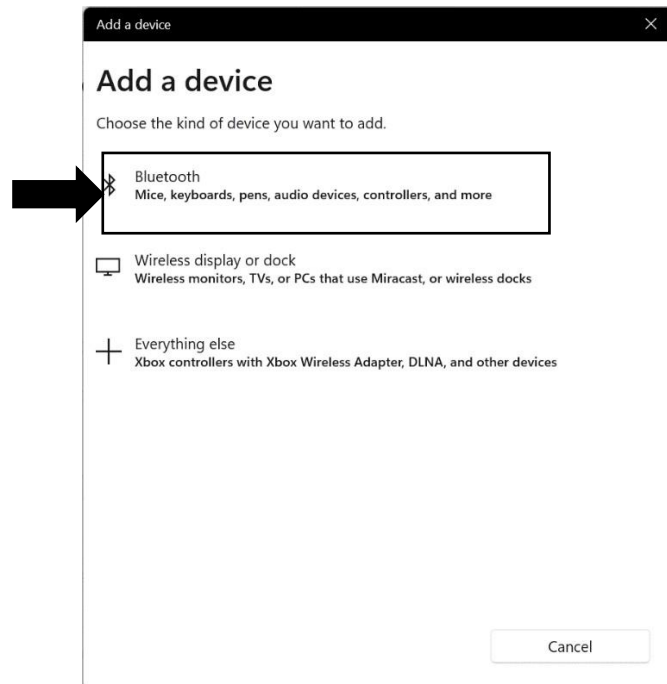
Step 1:

- Switch ON printer and press **FEED button** of the printer to print the self-test page.
- Find out the “Printer Name and Biometric Name” of Vriddhi L1 device from the self-test page

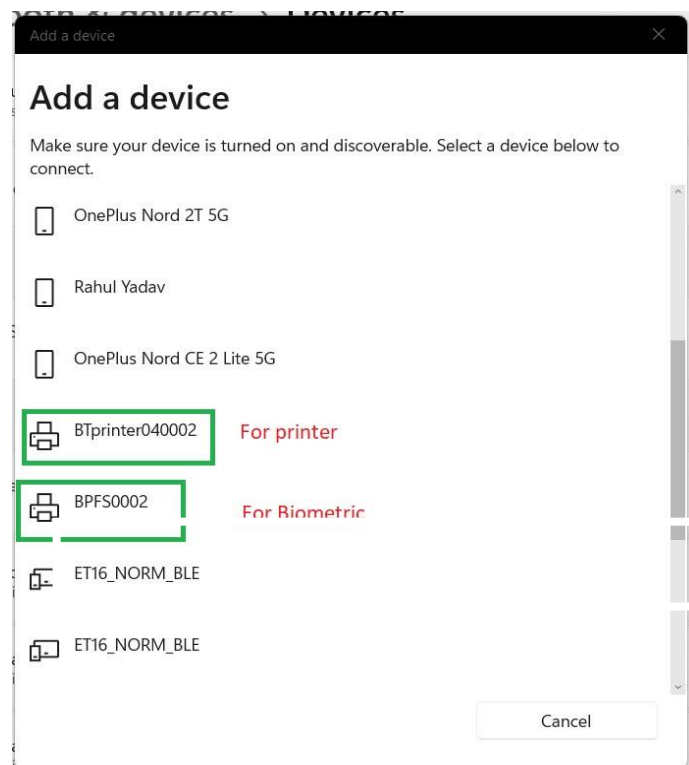
Step 2: Open **system setting** and click on “**Bluetooth and Devices**” then Click on **ADD device**



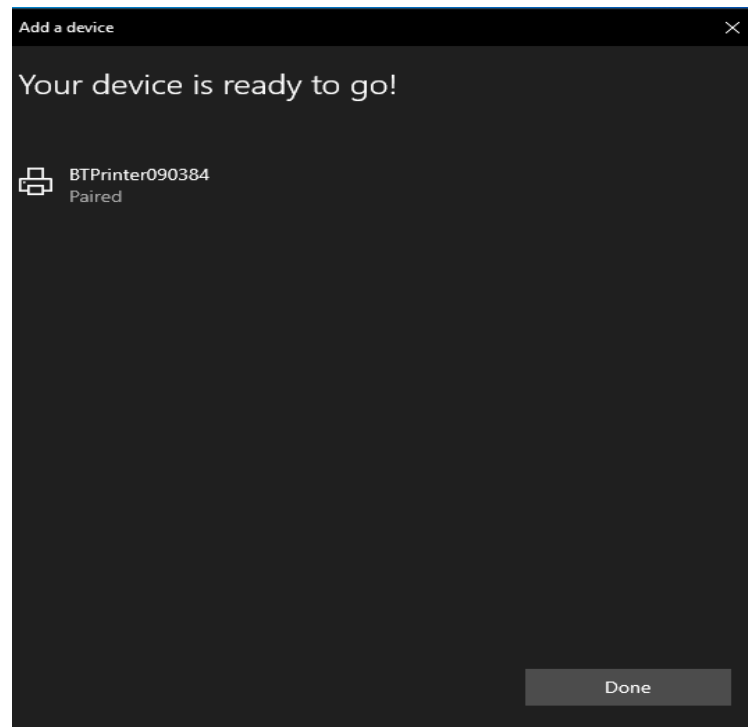
Step 3: Select Bluetooth.



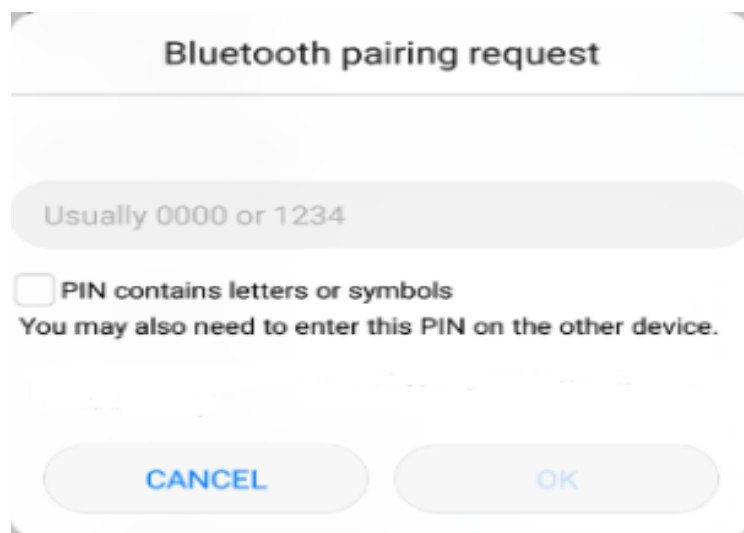
Step 4: Click on the Device Name starting with "BTprinterxxxx" for printing application and "BPFSxxxx" for Biometric application.



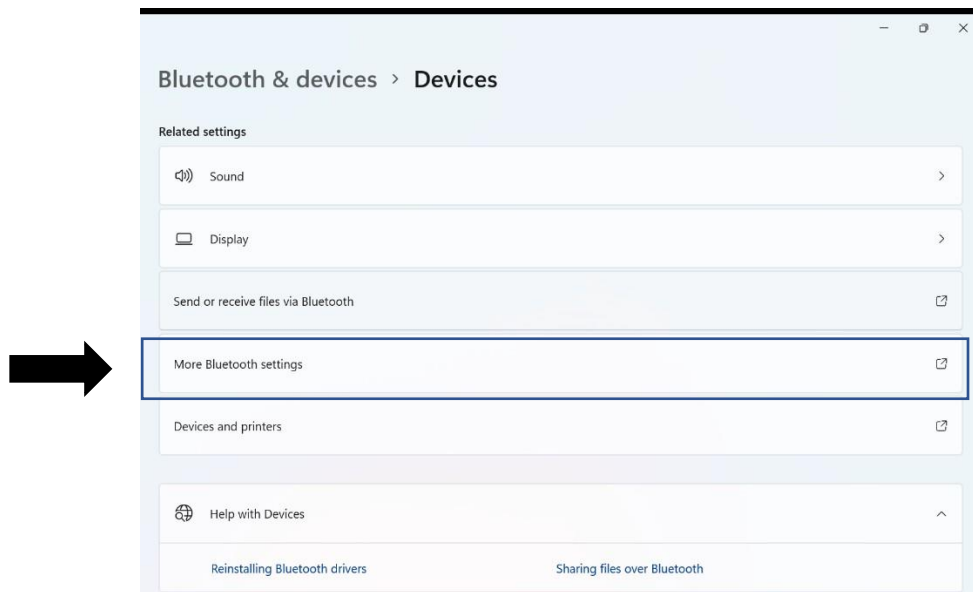
Step 5: Now the printer is pair to your PC\Laptop and press the **“Done button”** as show in figure



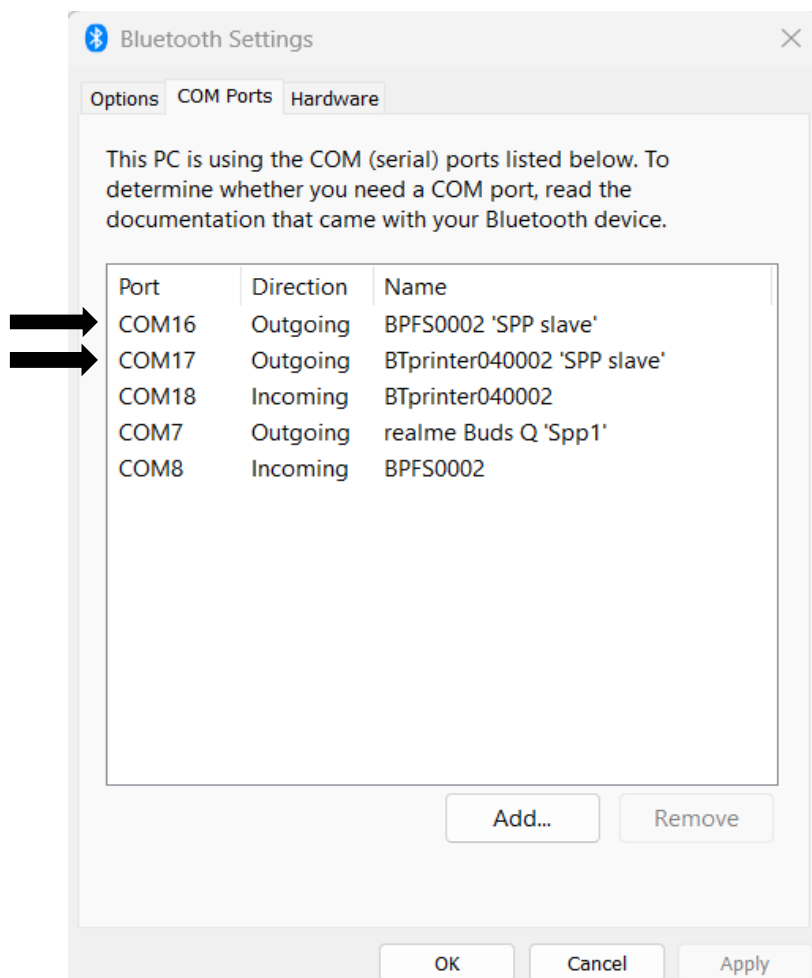
Step 6: Enter the PIN (**either 1234 or 0000**) if asked.



Step 7: Scroll down and click on **“More Bluetooth Settings”**.



Step 8: In the Bluetooth settings window Note down **Outgoing (SPP Slave)** port number of your Printer and Biometric Device.



B) Installing Printer Driver

Follow Instruction manual of installing Printer driver and connecting Printer via Bluetooth.

C) Connecting Biometric with RD service via Bluetooth

Note:- If RD service and RD L1 Support tool is not installed, then install these two file by referring “Windows RD service Installation Guide”.

Step 1: Go To **PATH: `C:\Program Files (x86)\Access Computech Pvt Ltd\ACPL L1 RDSERVICE\`**

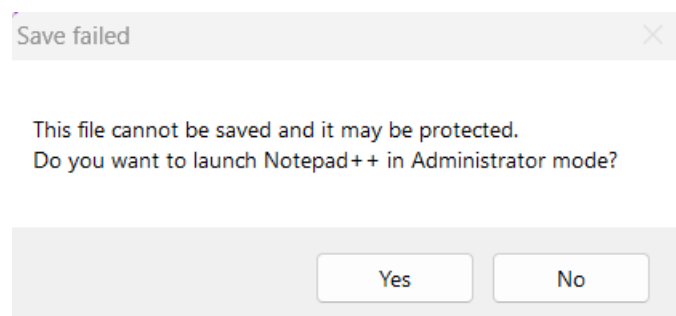
And open File “ACPL_L1_RDSERVICE.exe.config” in Notepad++.

This PC > Windows (C:) > Program Files (x86) > Access Computech Pvt Ltd > ACPL L1 RDSERVICE				
Name	Date modified	Type	Size	
ACPL_L1_RDSERVICE	22-03-2023 15:32	Application	272 KB	
ACPL_L1_RDSERVICE.exe.config	18-05-2023 16:52	CONFIG File	3 KB	
ACPL_L1_RDSERVICE.InstallState	18-05-2023 16:46	INSTALLSTATE File	8 KB	
AutomaticUpdater.dll	06-09-2012 04:41	Application extens...	83 KB	
client.wyc	06-08-2022 13:28	WYC File	54 KB	
Google.Protobuf.dll	20-02-2020 20:41	Application extens...	356 KB	
msvcr100d.dll	20-02-2011 02:01	Application extens...	1,470 KB	
Newtonsoft.Json.dll	09-11-2019 00:56	Application extens...	684 KB	
RDNativeHelper.dll	14-12-2020 09:20	Application extens...	70 KB	
System.Net.Http.Formatting.dll	28-11-2018 13:00	Application extens...	175 KB	
System.Web.Http.dll	28-11-2018 13:01	Application extens...	445 KB	
System.Web.Http.SelfHost.dll	28-11-2018 13:02	Application extens...	88 KB	
wyUpdate	06-09-2012 04:34	Application	422 KB	

Step 2: Change the COM Port number in the line as shown in below image to the COM Port number noted down in section A step 8 for biometric.

```
<?xml version="1.0" encoding="utf-8"?>
<configuration>
  <startup>
    <supportedRuntime version="v4.0" sku=".NETFramework,Version=v4.6"/>
  </startup>
  <system.net>
    <defaultProxy useDefaultCredentials="true"/>
  </system.net>
  <appSettings>
    <add key="SSL_Port" value="11200" />
    <add key="UseCustomProxy" value="False" />
    <add key="ProxyServerIP" value="" />
    <add key="ProxyServerPort" value="" />
    <add key="ProxyUser" value="" />
    <add key="ProxyPassword" value="" />
    <add key="ClientSettingsProvider.ServiceUri" value="" />
    <add key="Allow_Origin" value="*" />
    <add key="Write_Log" value="FALSE" />
    <add key="DefaultTimeout" value="20000" />
    <add key="Com_Port" value="COM16" />
    <add key="Wait_Submit" value="FALSE" />
  </appSettings>
  <runtime>
    <assemblyBinding xmlns="urn:schemas-microsoft-com:asm.v1">
      <dependentAssembly>
        <assemblyIdentity name="System.Web.Http" publicKeyToken="31bf3856ad364e35" culture="neutral"/>
        <bindingRedirect oldVersion="0.0.0.0-5.2.7.0" newVersion="5.2.7.0"/>
      </dependentAssembly>
      <dependentAssembly>
        <assemblyIdentity name="Newtonsoft.Json" publicKeyToken="30ad4fe6b2a6aeed" culture="neutral"/>
        <bindingRedirect oldVersion="0.0.0.0-12.0.0.0" newVersion="12.0.0.0"/>
      </dependentAssembly>
    </assemblyBinding>
  </runtime>
  <system.web>
    <membership defaultProvider="ClientAuthenticationMembershipProvider">
      <providers>
        <add name="ClientAuthenticationMembershipProvider" type="System.Web.ClientServices.Providers.ClientAuthenticationMembershipProvider" />
      </providers>
    </membership>
    <roleManager defaultProvider="ClientRoleProvider" enabled="true">
      <providers>
```

Step 3: Now Save the file through Notepad++ and if below warning show then click on "Yes". After file saved, close notepad++.



Step 4: Now restart RD service and wait for RD service to get ready.

