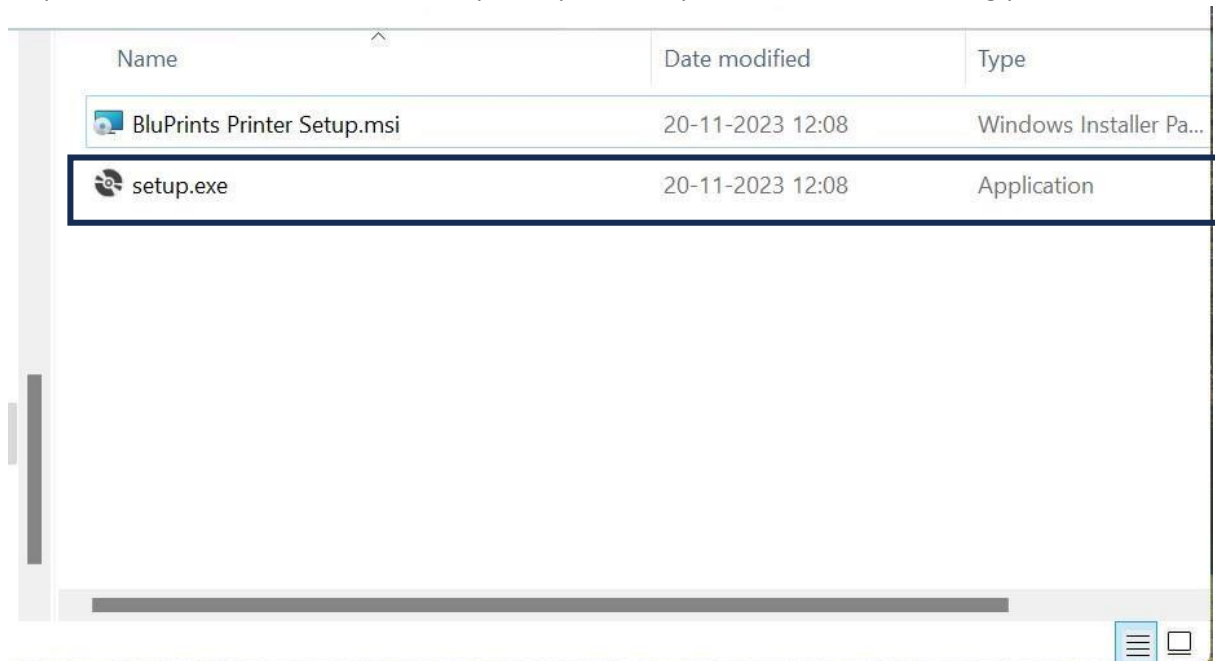


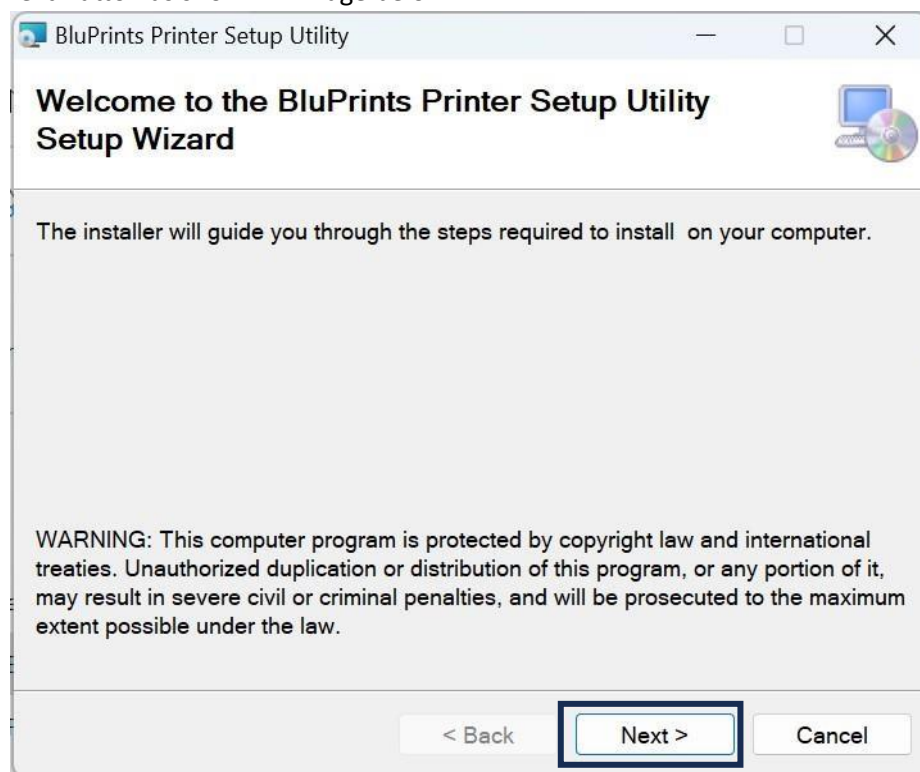
BluPrints PrinterSetup Utility Manual Guide

How to Install

Step: -1 To install BluPrints PrinterSetup Utility, run setup.exe file and do accordingly.

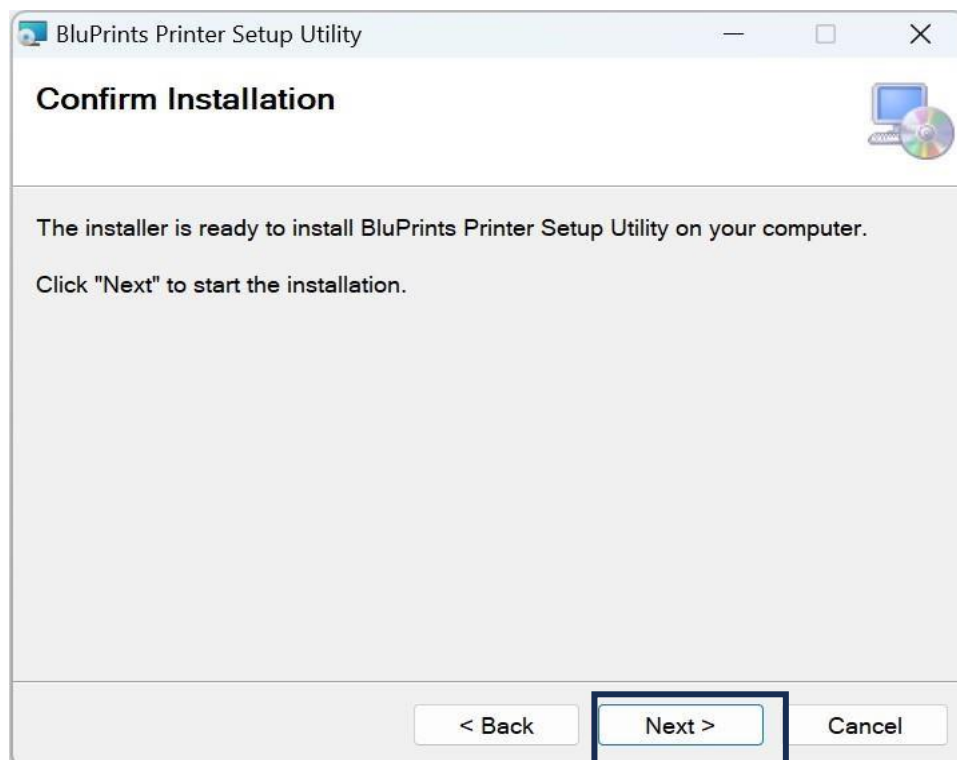
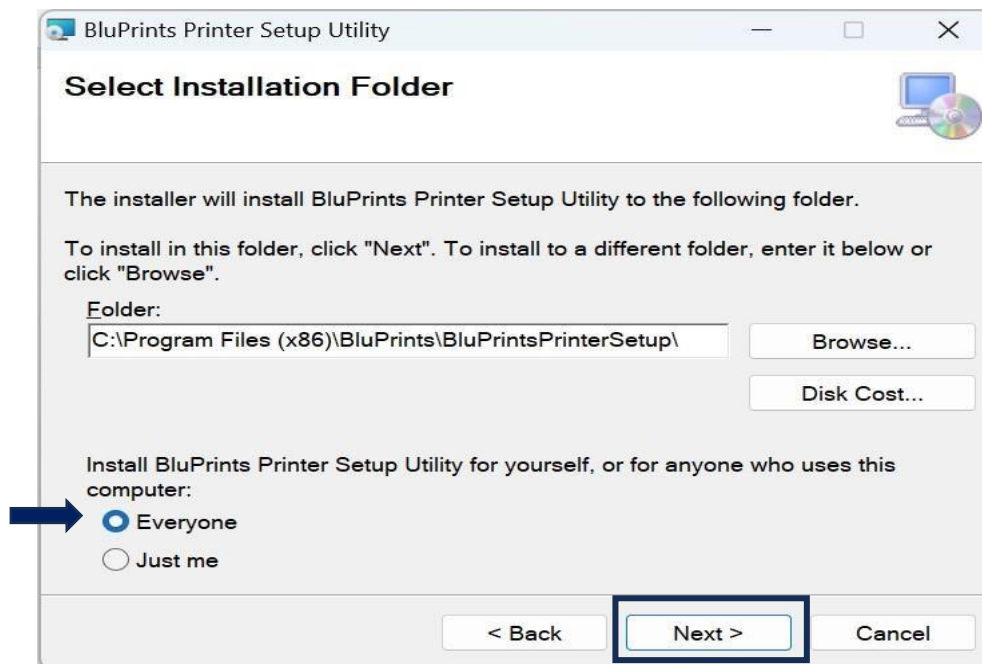


Step: -2 Click on Next Button as shown in image below.



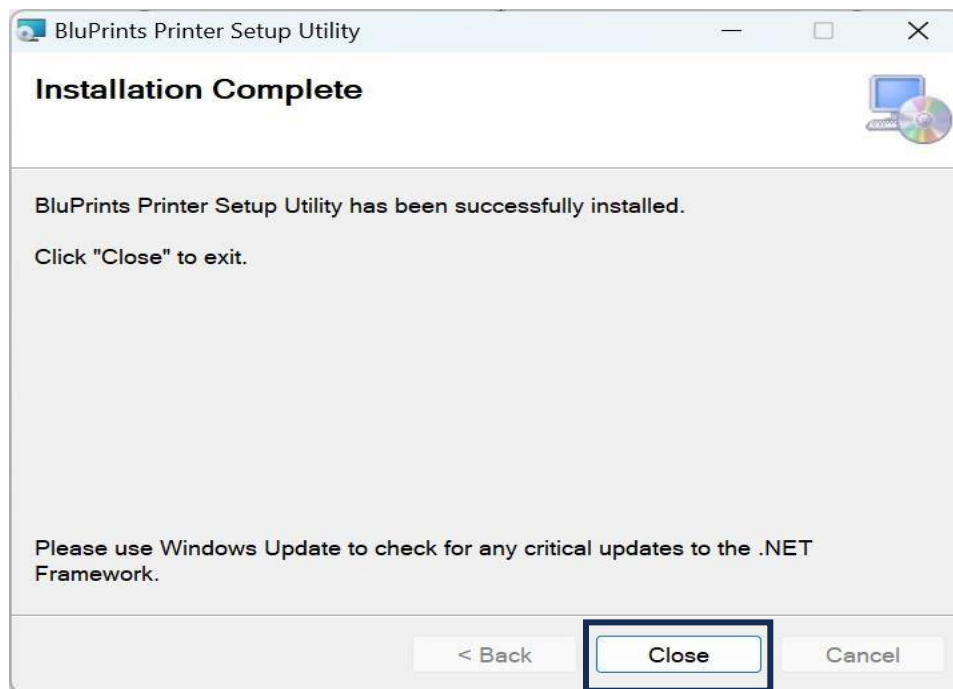
BluPrints PrinterSetup Utility Manual Guide

Step: -3 In the options provided to Install BluPrints PrinterSetup Utility for Everyone or Just Me, click on “Everyone”, Click on the next button and wait until the installation completes.



BluPrints PrinterSetup Utility Manual Guide

Step: -4 Click on close button after the installation is completed.



Now, Application shortcut named by "BluPrints PrinterSetup Utility" is created on the Desktop as well as in Program menu.

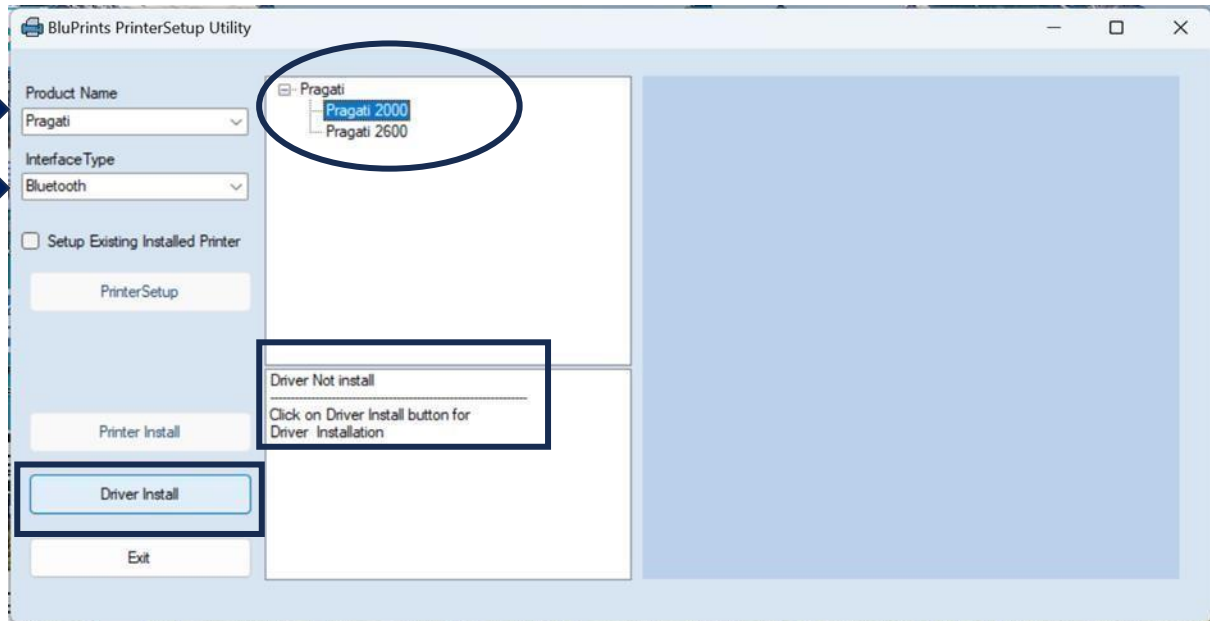
BluPrints PrinterSetup Utility Manual Guide

How to use

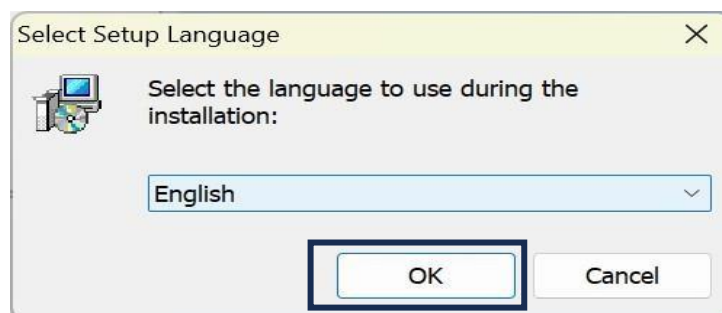
Step: -1 Now run BluPrints PrinterSetup Utility you will see following window. First select Product Name, interface type and model name.

(If there is no driver in your system, you will see the message to install the driver. Click on the Driver install button.)

Driver Installation



Step: - 1.1 Click on OK Button.



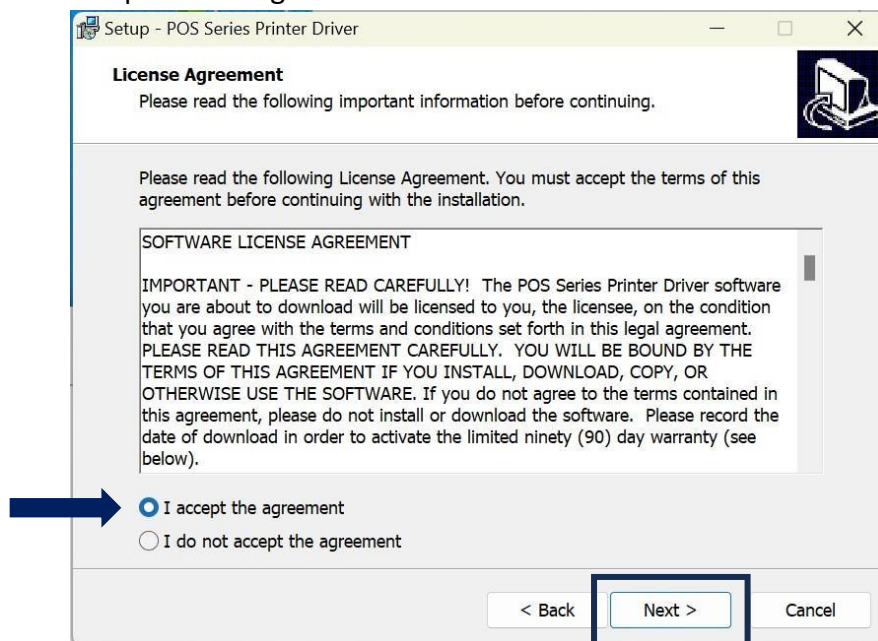
BluPrints PrinterSetup Utility Manual Guide

Step:

-1. 2 Click on Next Button.



Step: - 1.3 Accept license agreement then click on next button.

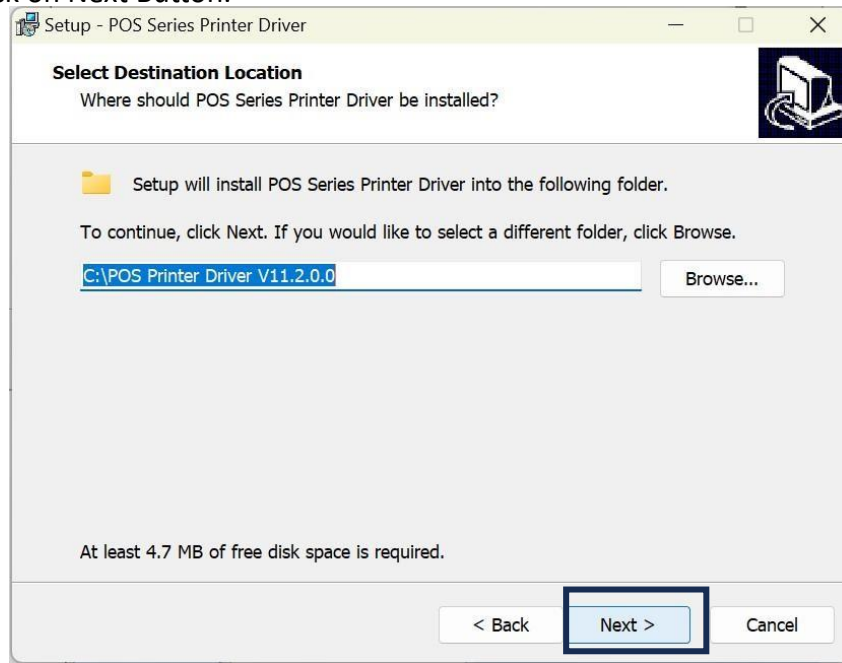


BluPrints PrinterSetup Utility Manual Guide

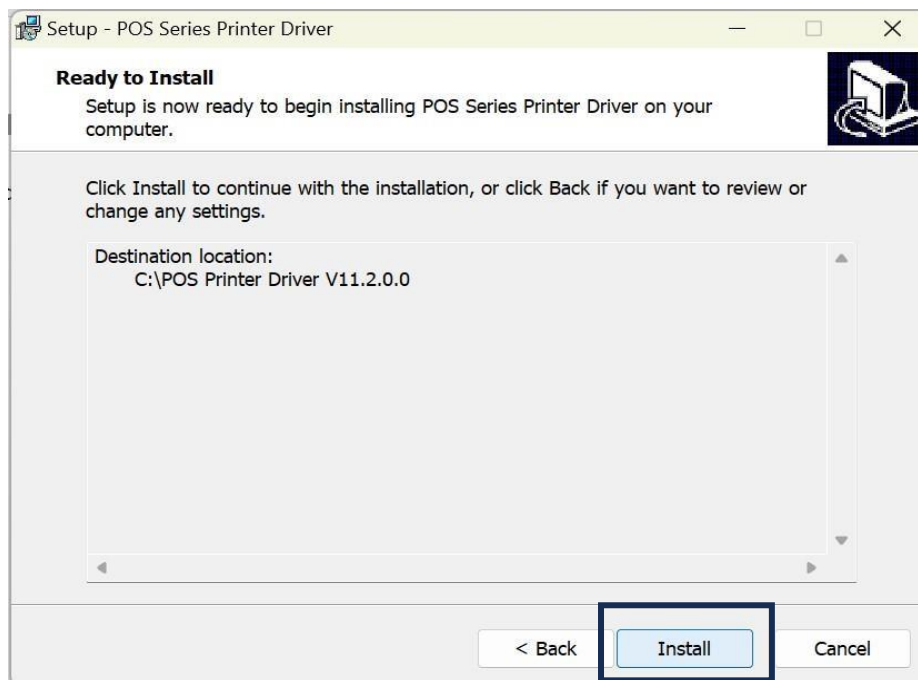
BluPrints PrinterSetup Utility Manual Guide

Step:

- 1.4 Click on Next Button.



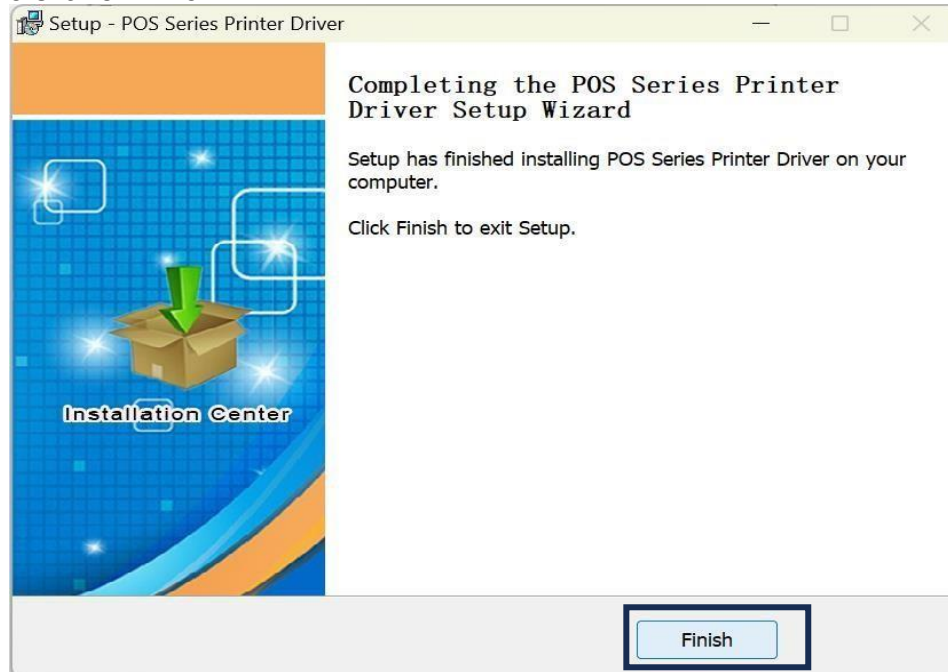
Step: - 1.5 Click on Install button.



BluPrints PrinterSetup Utility Manual Guide

Step:

- 1.6 Click on Finish.

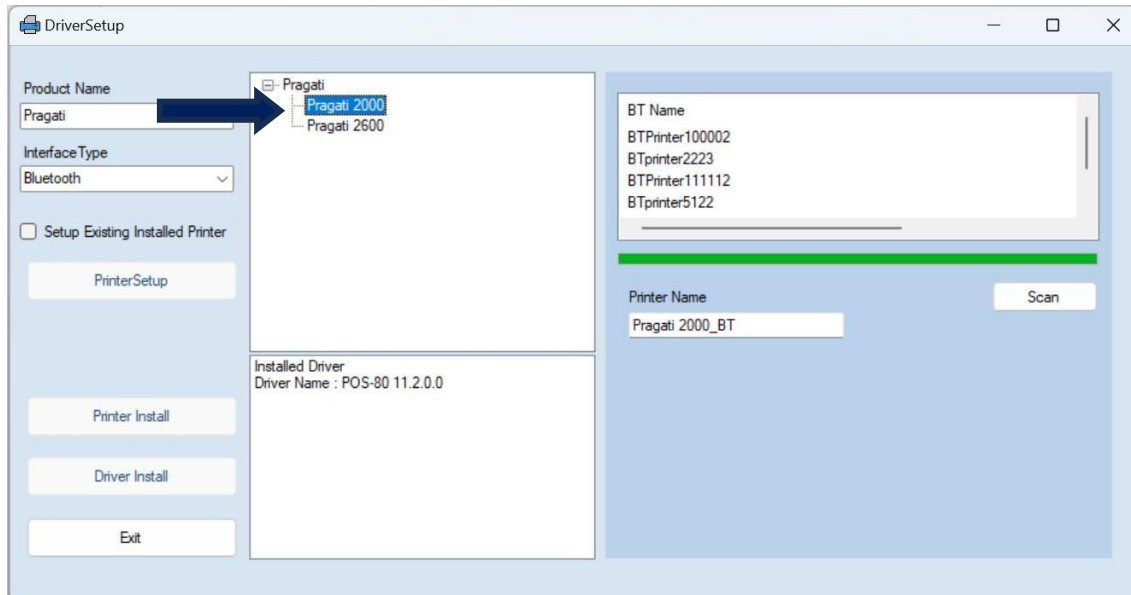


Step: -1.7 If the following window appears after the above process, click on the install button. If it's not visible, skip it.



BluPrints PrinterSetup Utility Manual Guide

Step: -2 Driver is successfully installed now select interface type and model name.

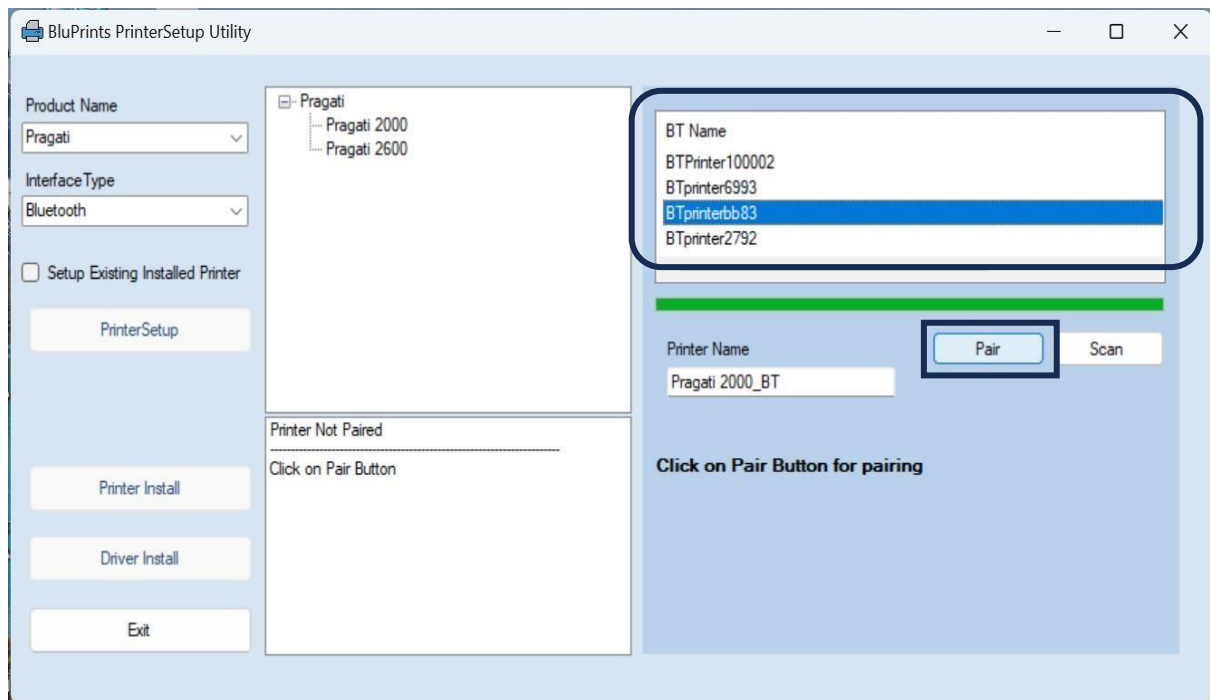


BluPrints PrinterSetup Utility Manual Guide

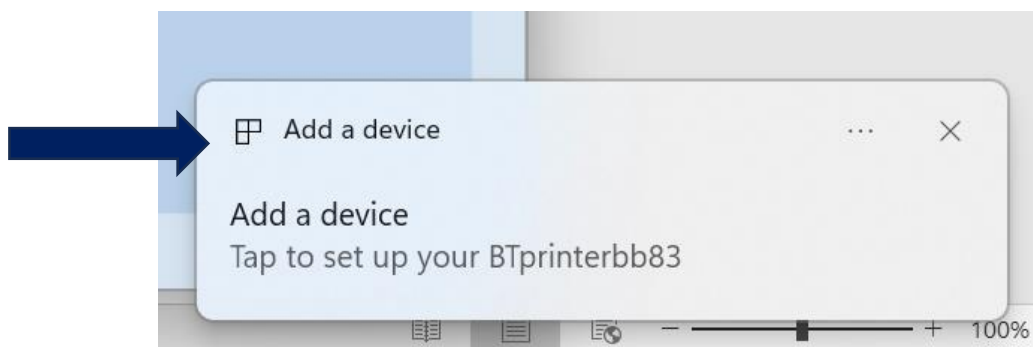
Step: - 3 If Bluetooth as interface is selected, then select your model's name.

Bluetooth Interface

Step: - 3.1 Select BT name of the printer for the connection. If selected BT printer is not paired then click on pair button below, click on pair button after that it shows notification on the left corner of the window.

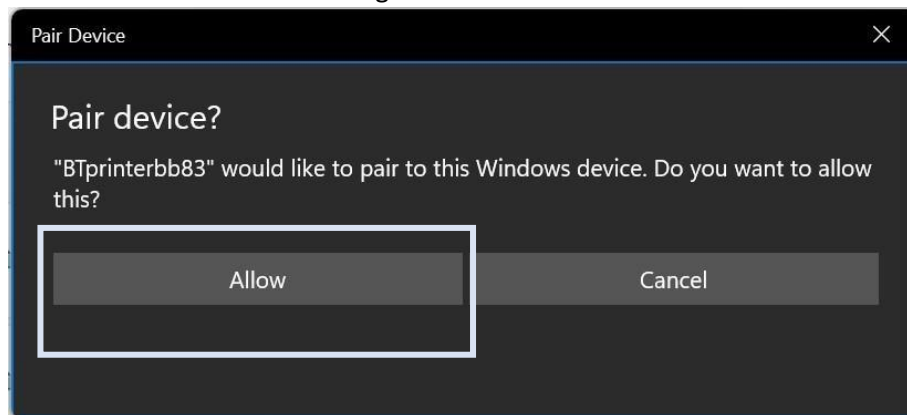


Step: - 3.2 Double click on Add a device Notification.

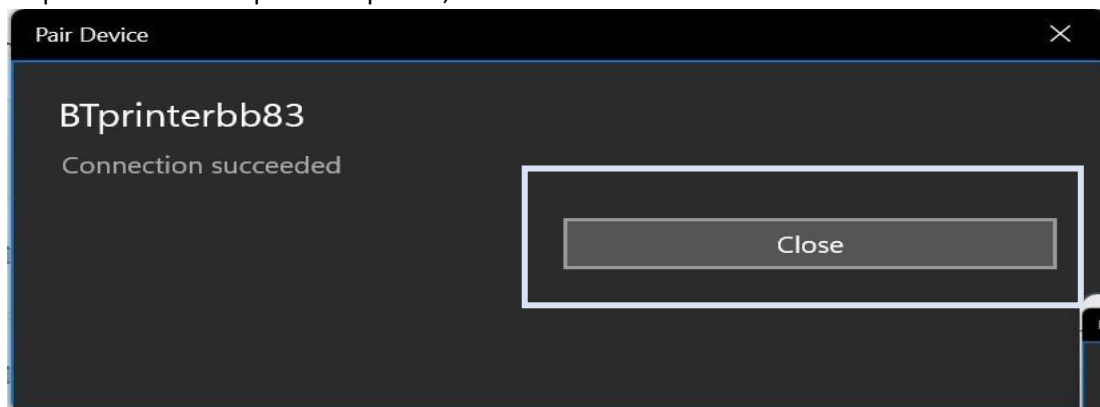


BluPrints PrinterSetup Utility Manual Guide

3.3 You will find following window now click on allow button.



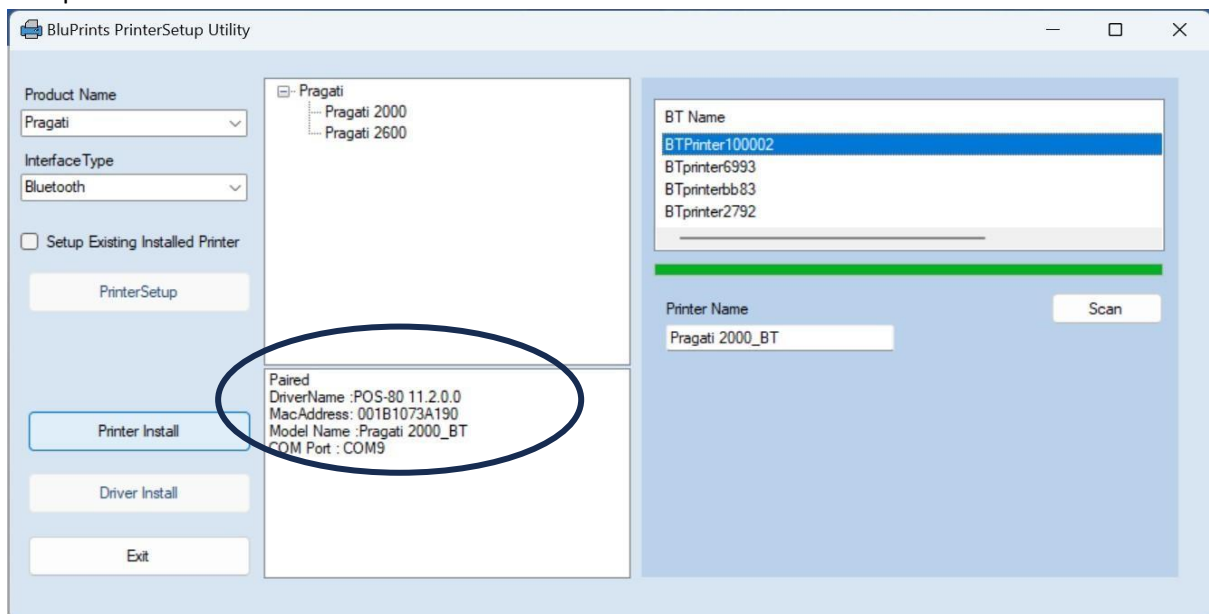
Step: - 3.4 After that printer is paired, click on close button.



Devices updates automatically.

BluPrints PrinterSetup Utility Manual Guide

3.5 When selected BT is paired then it shows status of Bluetooth device name, driver name, com port etc.



Step: - 3.6 Now click on Printer Install button. After some waiting the printer will be installed completely.

BluPrints PrinterSetup Utility Manual Guide

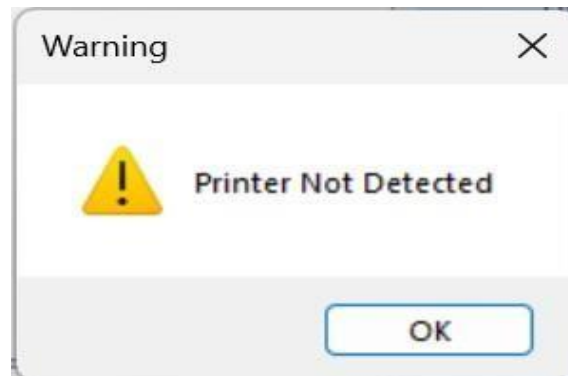
Step: - 4

If USB as interface is selected, then select your model's name.

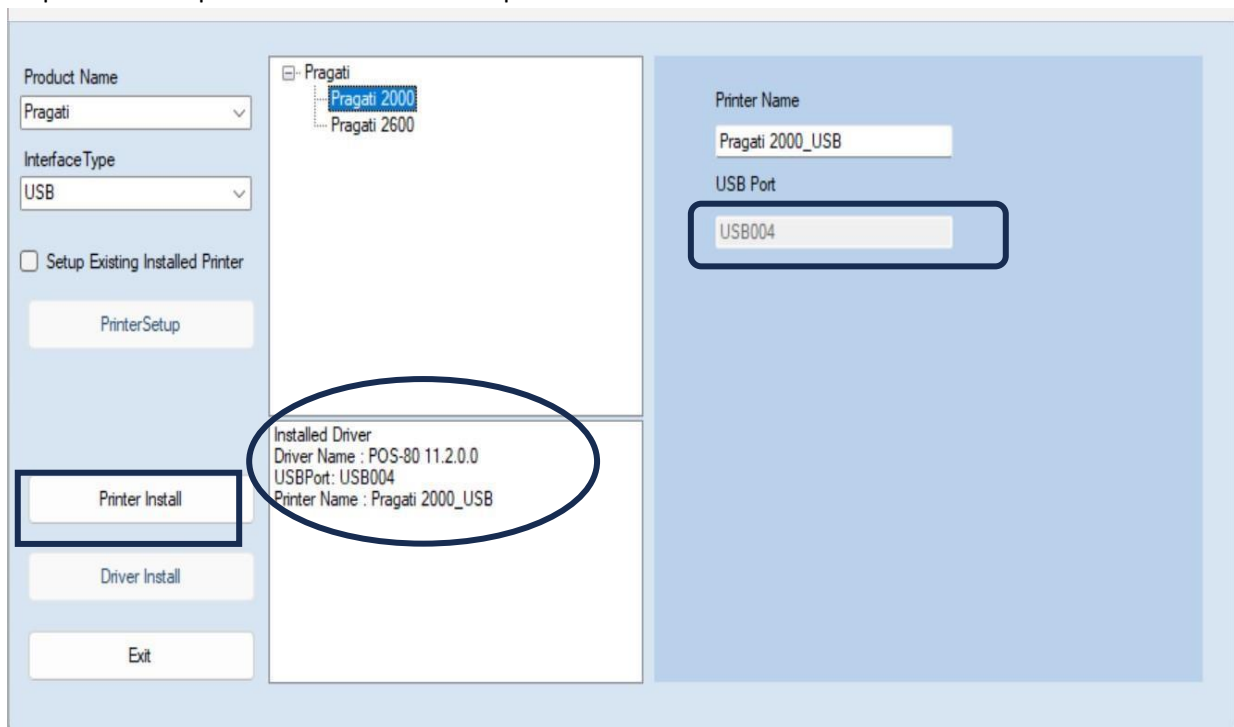
USB Interface

Step: -4.1 Connect USB printer to the system and Select model name from the list.

(It detects port automatically, if printer not detected it will show Warning message.)



Step: - 4.2 After port initialisation click on printer install button.



Step: -4.3 USB Printer will install Successfully, after installation printer prints a TestPrint.

BluPrints PrinterSetup Utility Manual Guide

Step: -5

If Ethernet as interface is selected, then select your model's name.

Ethernet Interface

If interface type Ethernet is selected. Ethernet is only available for utkarsh . Step: -

5.1 Enter the valid ip address.

The screenshot shows the 'PrinterSetup' utility window. On the left, there are dropdown menus for 'Product Name' (set to 'Utkarsh') and 'Interface Type' (set to 'Ethernet'). Below these is a checkbox for 'Setup Existing Installed Printer' which is unchecked. A 'PrinterSetup' button is present. In the center, a tree view shows 'Utkarsh' expanded with sub-items 'Utkarsh Premium' and 'Utkarsh ULTRA Premium'. Below the tree, the 'Installed Driver' section shows 'Driver Name : POS-80 11.2.0.0' and 'Printer Name :Utkarsh ULTRA Premium_Ethernet'. On the right, the 'Enter IP' section has four input fields containing '192', '168', '1', and '101'. Below that, the 'Device Name' field contains 'Utkarsh ULTRA Premium_Ethernet'. At the bottom left, there are buttons for 'Printer Install', 'Driver Install', and 'Exit'.

Step: - 5.2 Now click on printer install button.

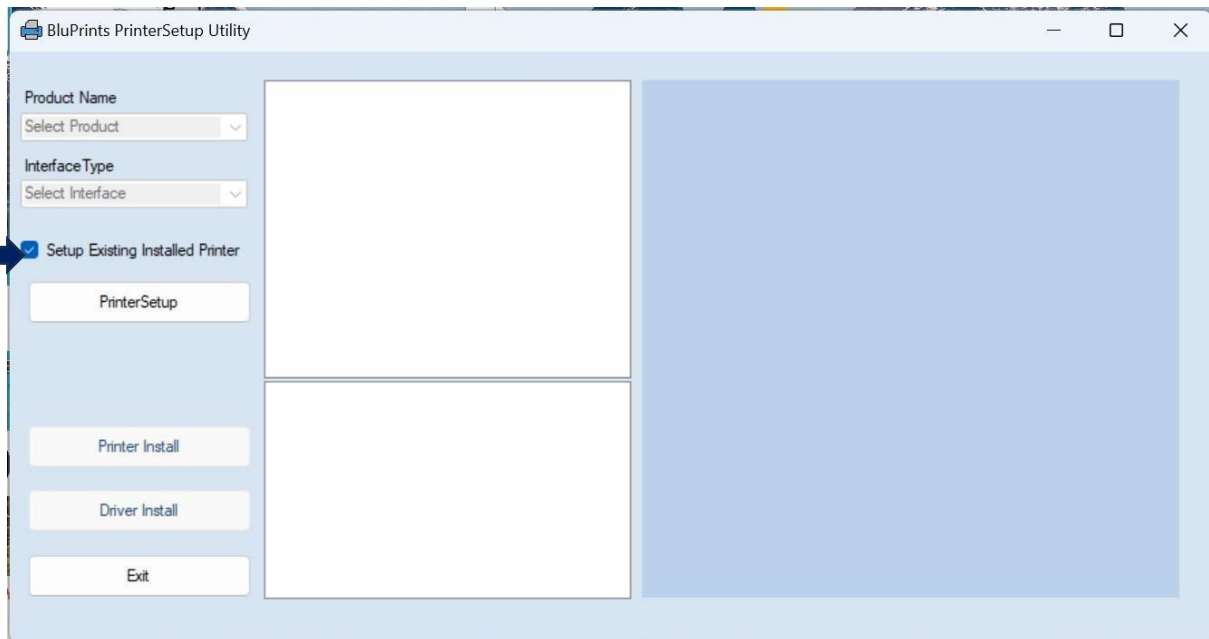
This screenshot is identical to the previous one, showing the same configuration for the Ethernet interface. The 'Printer Install' button at the bottom left is now highlighted with a blue rectangular border, indicating it is the next step in the process.

BluPrints PrinterSetup Utility Manual Guide

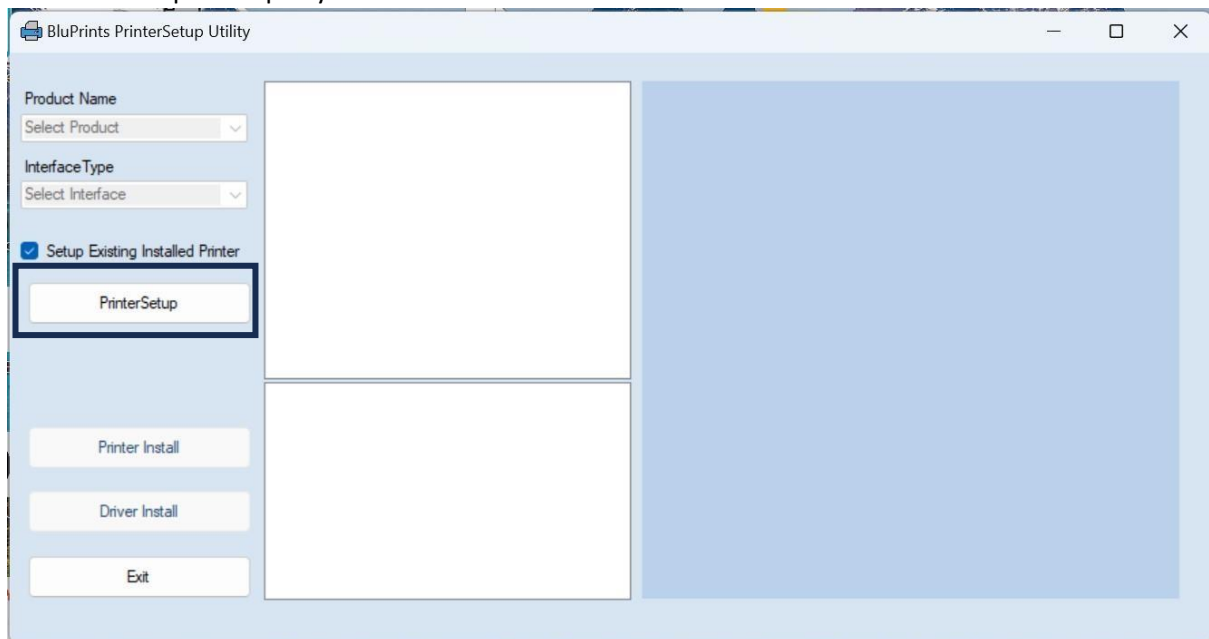
Step: -5.3 Ethernet Printer will install Successfully, after installation printer prints a TestPrint. -6

Printer Property

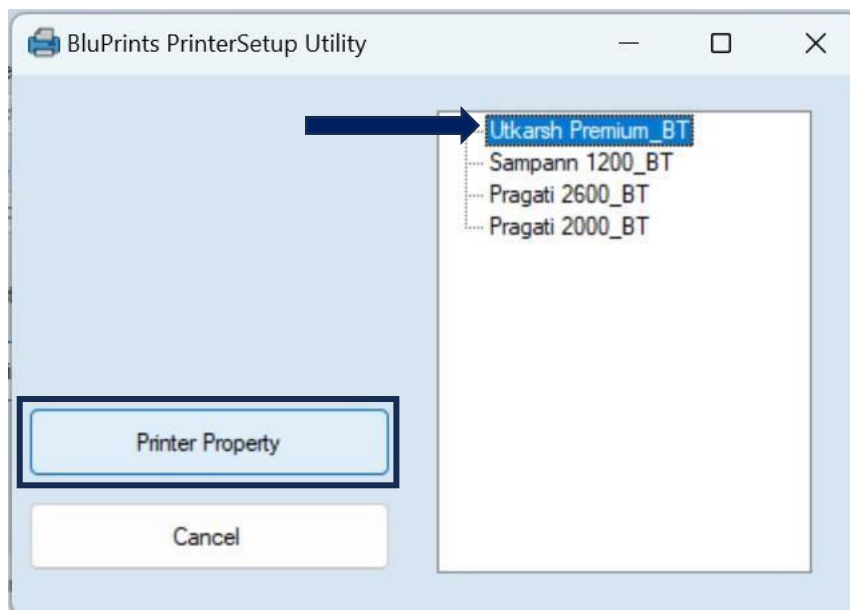
Step: To changing paper size and change any other properties of the installed printer simply mark on setup Existing installed Printer Button. After that PrinterSetup button will be enabled.



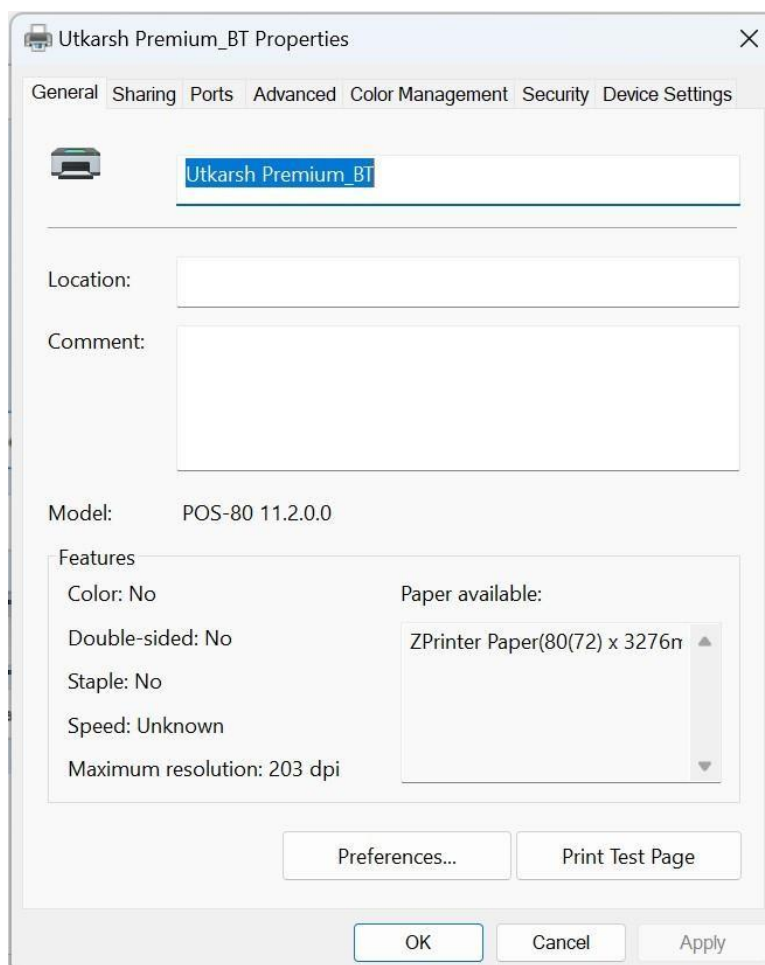
Step: -7 Click on PrinterSetup Button. After button Click new window will open. Here select printer and click on Open Property button.



BluPrints PrinterSetup Utility Manual Guide



Step: -8 Now you can change whatever printer settings you want.



BluPrints PrinterSetup Utility Manual Guide