



|| UNNATI ||



UNNATI

DIRECT THERMAL LABEL & RECEIPT PRINTER:

1 TO 4 INCH ADJUSTABLE

For Technical / Installation Related Support:

Mobile: +91 8377856941

Email: support@bluprints.in/services@bluprints.in

Website: www.bluprints.in

KNOW YOUR DEVICE

POWER SWITCH:

The Power switch is located on the back side of the printer. When it is pushed to the “_” side, the printer is switched on; when the “O” of the switch is pressed, the printer is switched off.

PAPER FEED - Single Press of the Button releases (feeds) paper

TEST PRINT – Hold down FEED button and turn on the printer at the same time to print self-test: Name, Battery Status, Communication Mode, Firmware Version

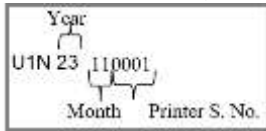
RED –ERROR CONDITIONS: (Note: 1 Blink = Half Sec ON, then OFF)

- 1. Bluetooth Not Working:** Red LED Blinks and Buzzer Beep once every 3 Seconds.
- 2. Platen Open:** Red LED Blinks and Buzzer Beeps twice every 3 Seconds
- 3. NO Paper:** Red LED Blinks and Buzzer Beep four times after every 3 Seconds

NOTE: If multiple errors occur together, number blinks will add up.

GREEN – FOR POWER ON

PRINTER SERIAL NUMBER (ON THE LABEL)



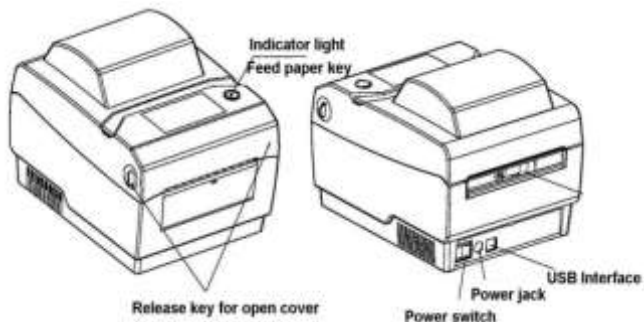
DRIVERS / SOFTWARE / APPS AVAILABLE ON WEBSITE

| | |
|---|--------------------------------|
| 1 | SOFTWARE DEVELOPMENT KIT (SDK) |
| 2 | USB DRIVER – 1-4 INCHES |
| 3 | DEMO APPLICATION |

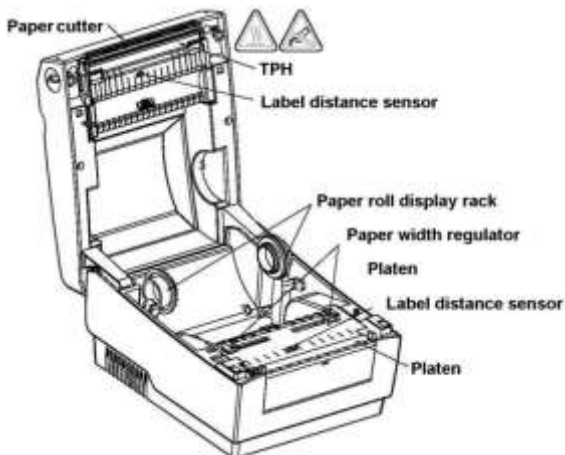


<https://bluprints.in/downloads/>

FRONT & REAR VIEW

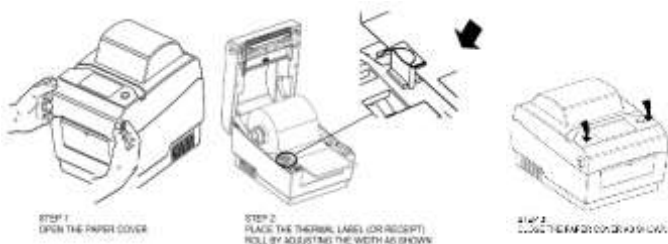


INSIDE VIEW






THERMAL PAPER INSTALLATION

Thermal Paper roll can print only on one side. To identify the Thermal side, scratch the paper roll on both sides. The side which turns black is the Thermal Side. Keep the paper in such a way that thermal side of the roll is in contact with the printer head.



ACCESSORIES

| | | |
|----|---|---|
| 1. | 24 V / 2Amp 220 VAC Power Adapter (BluPrints Branded) |  |
| 2. | USB Data Cable – Type-A to Type-B |  |
| 4. | Thermal Label Roll |  |

MAIN FEATURES

1. Supports ESC POS/ZPL/TSPL Instruction Sets and supports USB, Bluetooth Interfaces. Bluetooth interface is available in the Premium Version. Default interface is USB.
2. It is able to print Barcodes of Code 39, Code 93, Code 128, UPC-A, UPC-E, EAN/JAN-8 , EAN/JAN-13
3. Easy to use device with High Print Quality with low noise.
4. Supports OPOS – OLE for Retail POS, a platform specific implementation of UnifiedPOS, a Point of Sale standard for Windows Operating Systems. OPOS standard specifies two levels for an OPOS control, control object which presents an abstract H/W interface to receipt printer and service object, which handles interface between control object and printer.
5. The Characters can be enlarged, Made Bold and Underlined.
6. The printer supports graphic printing.

DETAILS OF CONNECTORS

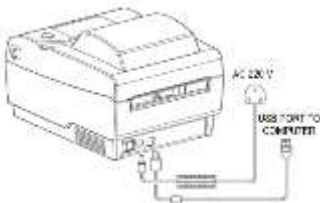
| | | |
|--|-----------------|---|
|  | USB | Universal USB Interface (Standard Type B) |
|  | Power interface | Power plug DC 24V. |

GETTING STARTED

1. Once the printer is switched ON, RED LED will blink a few times while configuring Bluetooth Baud Rate & default parameters of the Printer. Please wait for this process to be completed before using the Device.
2. **If the Printer is not getting switched ON:**
 - a. Check if the Power adapter is properly inserted.
 - b. Check if the adapter is properly plugged into the mains and its Red LED is glowing
 - c. Press FEED Button continuously while turning ON the Power Switch for 3-5 Sec to get test print
3. **Test Print shows following important information:**
 - a. **Bluetooth Name** (e.g.BTprinter1234), which will show on your Bluetooth Phone / tab / laptop.
 - b. **Firmware version**
 - c. **Communication:** shows Bluetooth/USB if both modes are working. It will not show the mode(s) that is/are not working.
4. Bluetooth Passwords for pairing (if required): 1234 or 0000
5. Use proper USB data cables for proper printing using USB.

CONNECTION

Connect the Power Adapter and the USB Cable as per following diagram:



USAGE AND CARE INSTRUCTIONS

1. The Print-Head is a heating component. Do not touch the Print-Head and its surrounding components while printer is still warm.
2. Do not touch the surface of Thermal Print head and connectors, in order to avoid any electrostatic damage to the Print-Head.
3. Do not Wet the Product or insert any metallic objects into it.
4. Use original BluPrints 24 Volts 2.5 Ampere Power adapter to ensure better printing quality and printer life. Any other adapter may result in excessive / or low current.
5. Use good quality thermal paper roll (75 GSM) & recommended paper size rolls for better print quality. Other paper types can cause jams and potentially cause damage.
6. Avoid contact with water or any conductive material (such as metal). In case such a thing happens just switch off the device immediately and get in touch with customer support.
7. Ensure that print command is given only when the paper roll is present in the printer and not in a stuck position. Otherwise, it might lead to damage to the printer head.
8. Keep the printer cover closed always to protect it from exposure to dust & sunlight exposure. Do not try to dismantle the device.
9. Keep the printer away from devices like microwaves that can obstruct Wi-Fi or Bluetooth signals.
10. Turn Off the printer when not use it for a long time period.
11. Be sure not to print continuously over 1 meter, otherwise may cause damage to the printer head.
12. Do not open paper case cover or touch paper roll while printing or feeding; otherwise, the printer may working properly.
13. Bluetooth Communication Distance should be within 10m, else it might print junk.
14. Too high (50°C) r too low (10°C) temperature and too high (80%) or too low (20%) relative humidity both affect Print Quality.
15. Connect the printer's power adapter to an appropriate grounding socket. Avoid using the same socket with equipment that may cause voltage fluctuation of power supply.

GENERAL MAINTENANCE

Your Printer Head Needs Cleaning When:

1. Printing is not clear
2. Some of the columns on the printed receipt are not clear
3. Feeding the paper is abnormally noisy.

Procedure to clean the Head:

1. Turn off the printer, disconnect the power cord, open the cover and remove paper roll.
2. If you have just finished printing, wait for print head to cool.
3. Now dip a soft cotton cloth in petrol/spirit/ethyl alcohol and clean the thermal printer head to remove the dust.
4. Wipe again with dry cotton cloth and re-test printer.

WARRANTY & SUPPORT

BluPrints offers 80 plus PAN-India Service Centres for walk-in resolution to problems for devices in / out of warranty.

The warranty period starts at the time of Product's original purchase, and the date of invoice issued to the customer. The Warranty Period is mentioned on the invoice. If you wish to make a claim under the Limited Warranty, you may call the support phone numbers (where this is available and please note national rates apply to calls) and/or where necessary, return your Product or the affected part (if it is not the entire Product) to our designated service location. Information about our designated service locations can be found at our website (www.bluprints.in).

Note: If the warranty period is over, service charges and replaced parts charges shall be applicable.

BLUPRINTS PRODUCT RANGE

1. SAMPANN RANGE OF 2 INCH THERMAL PRINTERS (58MM)

- **DESCRIPTION:** Bluetooth & USB Enabled 58MM Mobile thermal Printers with 1100 Mah – 2600 Mah Rechargeable Li-Ion Battery, Charger, USB Cable, Thermal Roll and Carry Case (Optional)
- **CERTIFICATIONS:** BIS, CE, WPC, IP-54, EMI/EMC



SAMPANN 1100



SAMPANN REGULAR



SAMPANN PREMIUM

2. PRAGATI 3 INCH THERMAL PRINTERS (80MM)

- **DESCRIPTION:** Bluetooth & USB Enabled 80MM Mobile thermal Printers with 2000 MAH - 2600 MAH Rechargeable Li-Ion Battery, Charger, USB Cable, Thermal Roll and Carry Case (Optional)
- **CERTIFICATIONS:** BIS, CE, WPC, IP-54, EMI/EMC



PRAGATI ECONOMY



PRAGATI REGULAR

3. UTKARSH 3 INCH DESKTOP RECEIPT PRINTERS (80MM)

- **DESCRIPTION:** USB, Ethernet (LAN) and Bluetooth Enabled 80MM Desktop thermal Printers with Autocutter, 24v/2.5 A Adapter, USB data Cable, Thermal Roll.
- **CERTIFICATIONS:** BIS, CE, WPC, IP-54, EMI/EMC

UTKARSH
REGULAR



UTKARSH
ULTRA
PREMIUM

4. VRIDDHI 2 INCH FULLY WIRELESS BIOMETRIC (AADHAR) ENABLED THERMAL PRINTERS – FIN-TECH SERIES

- **DESCRIPTION:** Bluetooth Enabled 58MM Mobile thermal Printers with 1100 MAH Rechargeable Li-Ion Battery, Charger, USB Cable, Thermal Roll, with Built-in Biometric STQC CERTIFIED Fingerprint scanner and 1 year RD Services for UIDAI
- **CERTIFICATIONS:** BIS, CE, WPC, IP-54, EMI/EMC, STQC, AEPS

VRIDDHI L0



VRIDDHI L1



BLUPRINTS RANGE OF PRINTER ACCESSORIES



PAPER ROLL



LABEL ROLL



USB TO MINI
USB CABLE



PROVIDED USB
CABLE TYPE A TO
TYPE B



7.5V BATTERY
CHINA/INDIA



7.4V BATTERY
CHINA/INDIA



LEATHER BAGS FOR PRINTERS



ADAPTER
DATA CABLE USB



ADAPTER
TYPE A USB



ADAPTER
TYPE B