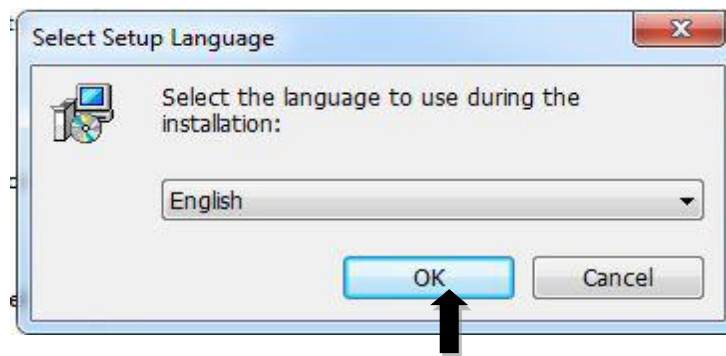


## Driver Installation (for USB Port)

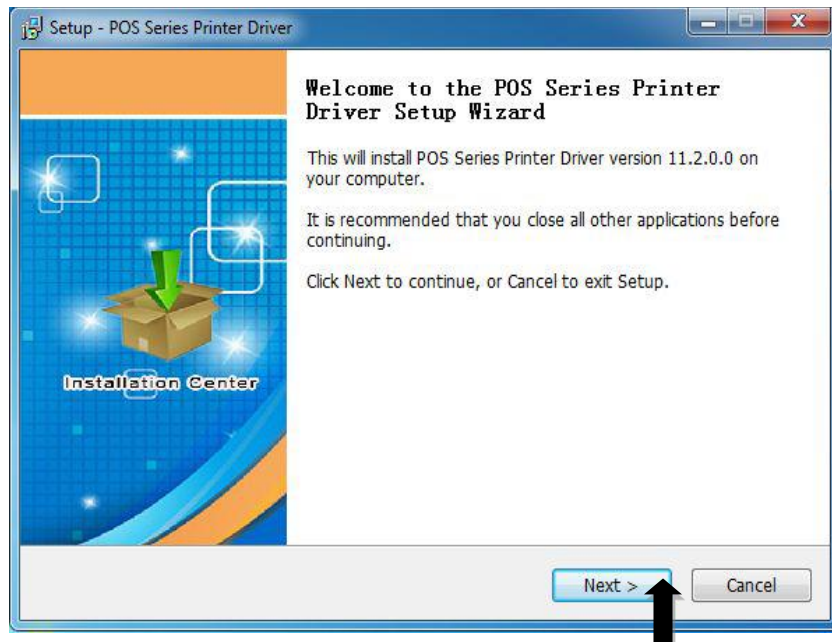
Please read and follow the following steps to install the driver “Printer Driver Setup .Exe”.

Before start please make sure that the printer is turned on and connected with PC/ Laptop via USB Cable.

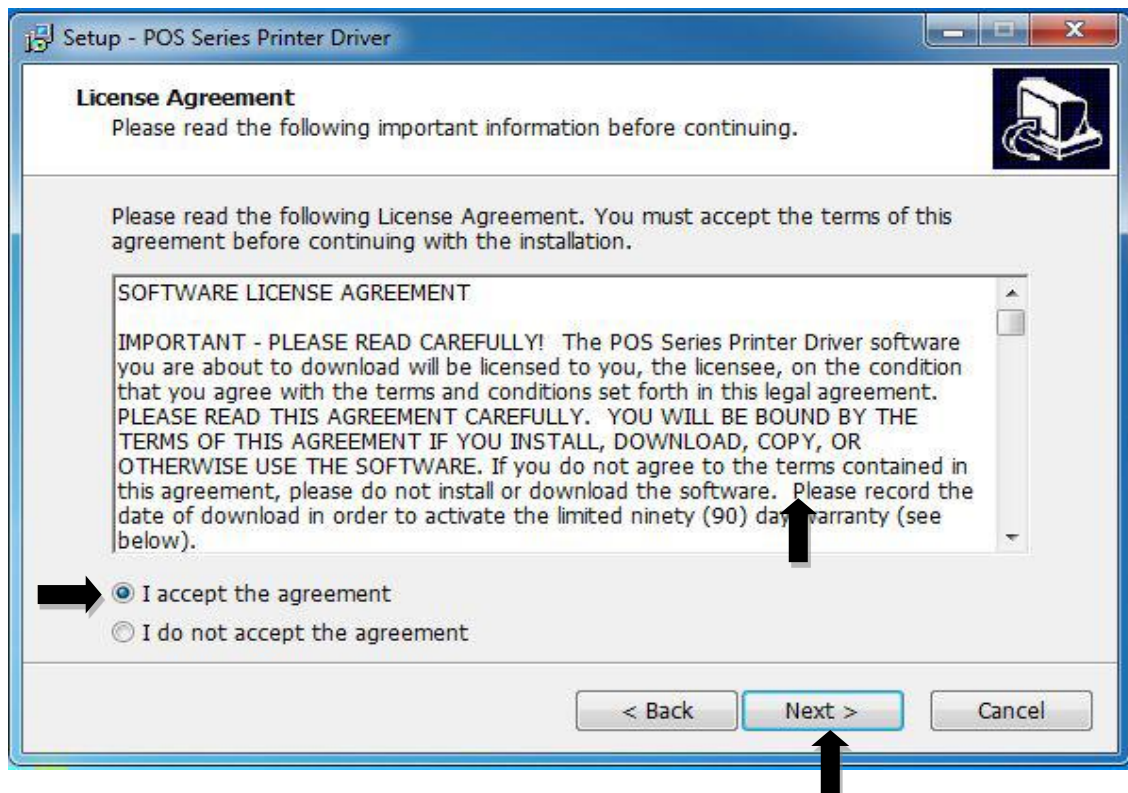
1. Download the driver, you will find Printer Driver Setup.exe. Click on it; the installation will start.
2. Choose the language and click “OK”



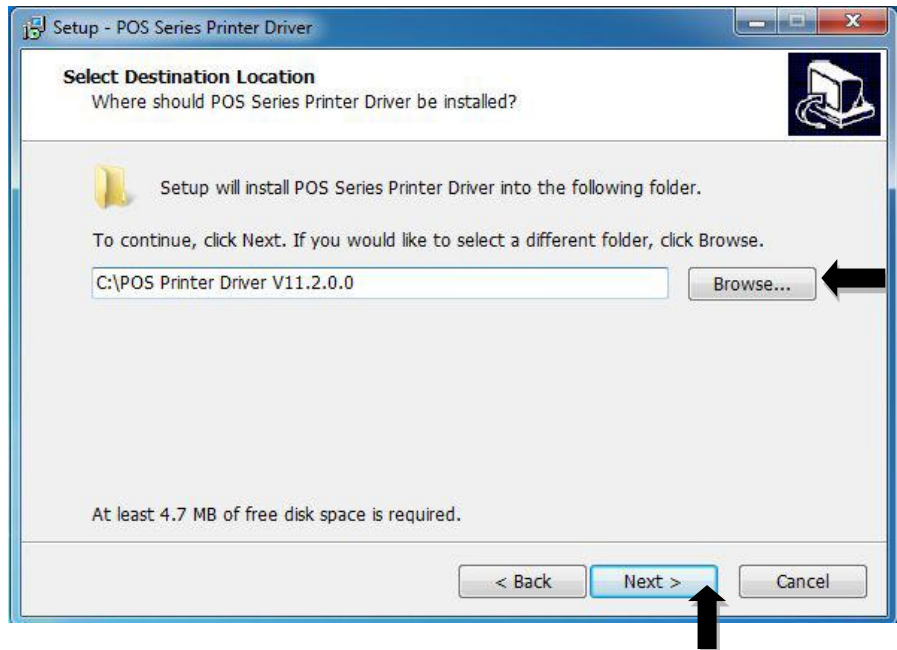
3. You will see the following screen. Click “Next”:



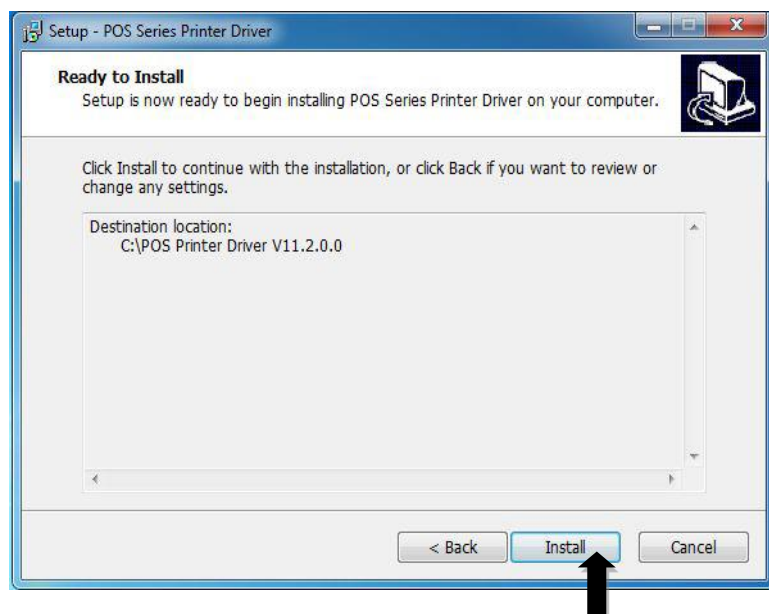
4. In the next screen select “I accept the agreement” and click “Next”, as shown below.



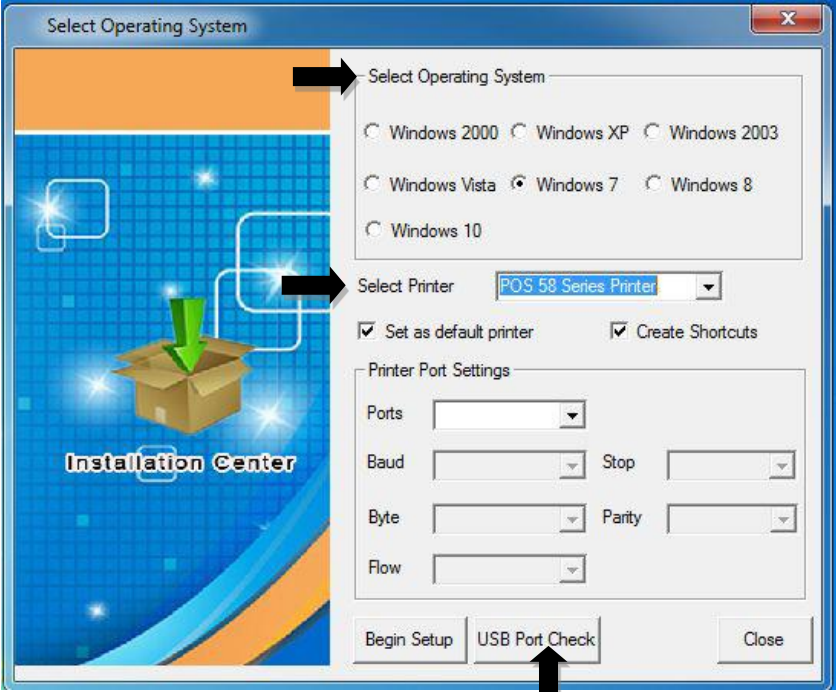
5. Now choose the default path or browse the path where you want to save the driver. Click Next.



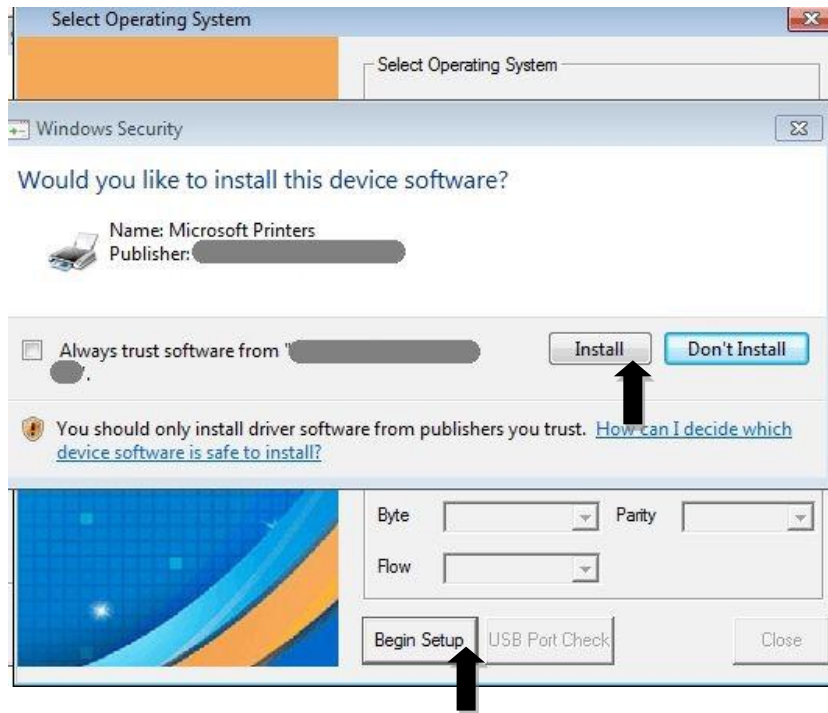
6. Now you can see the following screen, here click "Install". The installation will start, If your PC/Laptop has any antivirus software, please allow this installation.



7. After the installation, following screen will be displayed. Here choose the OS of your PC/Laptop, and select the printer model “POS 58 Series Printer”. Then click “USB Port Check”. Printer will print connected USB Port number.



8. Click “Begin Setup”, You will see following screen, choose “Install”,



9. Select “install this driver Software anyway”



10. When installation gets finished, you can find the printer “POS-58” in the control panel of your PC/laptop. In conventional option "Print Test Page" to verify that OK.